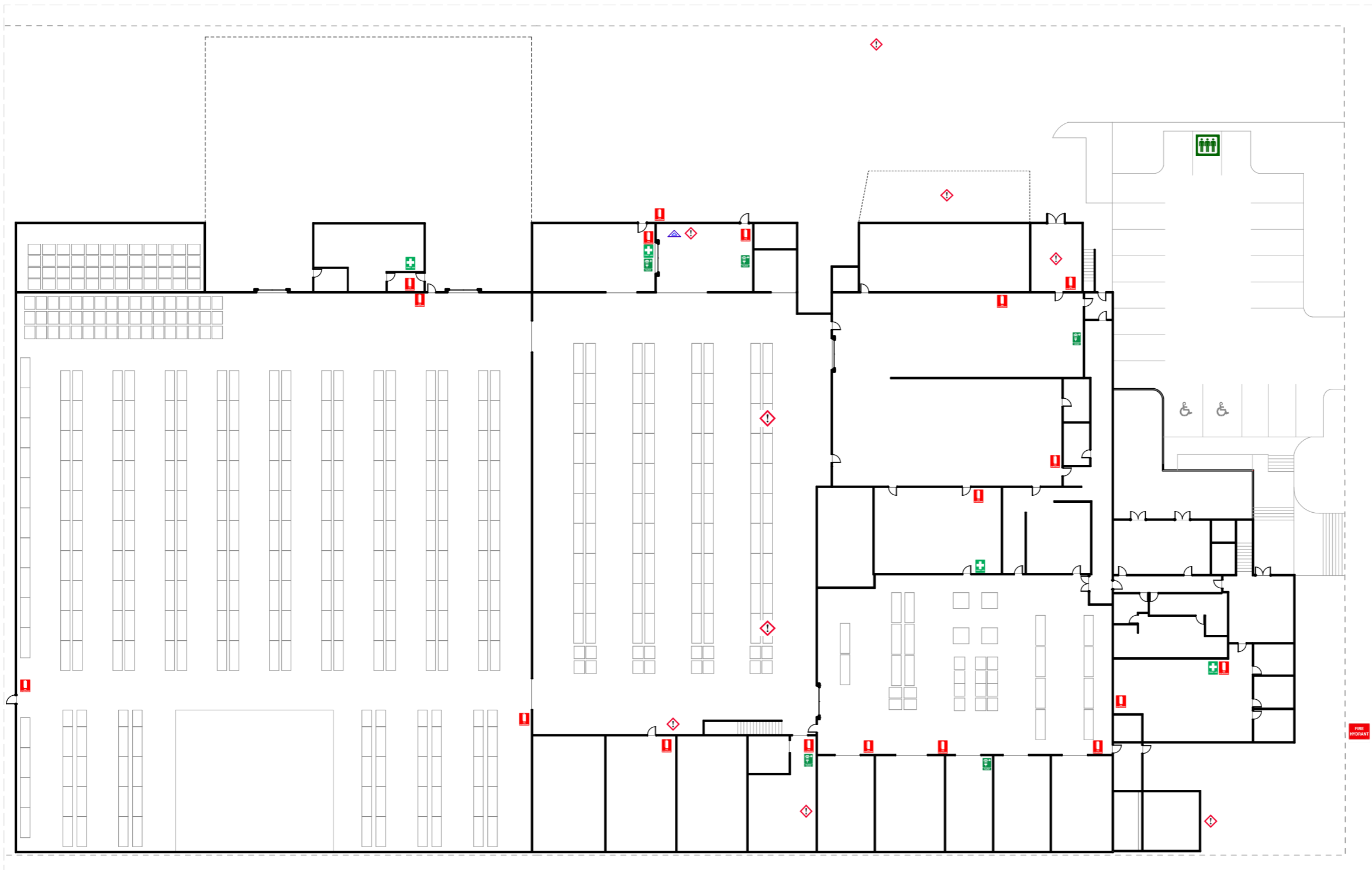
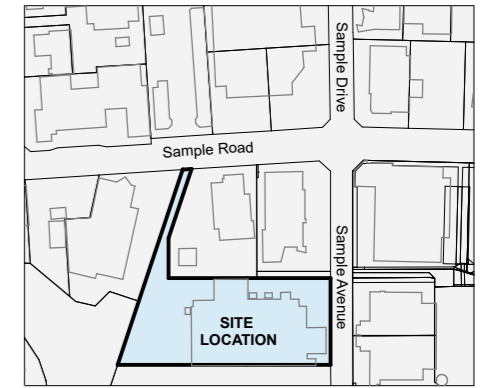


EVACUATION DIAGRAM

Ground Floor

Date: 07/10/2022



GROUND FLOOR
Scale - 1:420 @ A3 Paper

- | | | | |
|---|-------------------|---|-----------------|
|  | Fire Extinguisher |  | Dangerous Goods |
|  | First Aid |  | Eye Wash |
|  | Fire Hydrant |  | Assembly Area |



EVACUATION PROCEDURES

1. Remain Calm. Do not panic.
2. Follow WARDEN instructions and move to nominated safe area, await instructions
3. When advised, leave building by designated exit or nearest safe exit. **DO NOT USE LIFTS.**
4. Proceed to the closest **ASSEMBLY AREA** (see map), or as directed by Wardens/Emergency Services.
5. Remain at **ASSEMBLY AREA** until otherwise directed by Wardens/Emergency Services.

IN CASE OF EMERGENCY

- ISOLATE**
- Ensure all personnel are well clear of danger.
- COMMUNICATE**
- Inform all people in vicinity of the emergency
 - Call 111
- EVACUATE**
- Evacuate the facility and inform the chief warden.
- RECORD/REPORT**
- Record actions, report status to emergency services.

RING 111

FIRE EXTINGUISHER OPERATION

DO NOT ATTEMPT TO FIGHT FIRE IF ALONE

- Stay back from fire 2-3 meters.
- Check extinguisher is correct for the type of fire.
- Check pressure gauge.
- Ensure door or clear exit path is directly behind you.
- Use the **PASS** method:
Pull Pin
Aim at the edge of fire
Squeeze the handle
Sweep the fire

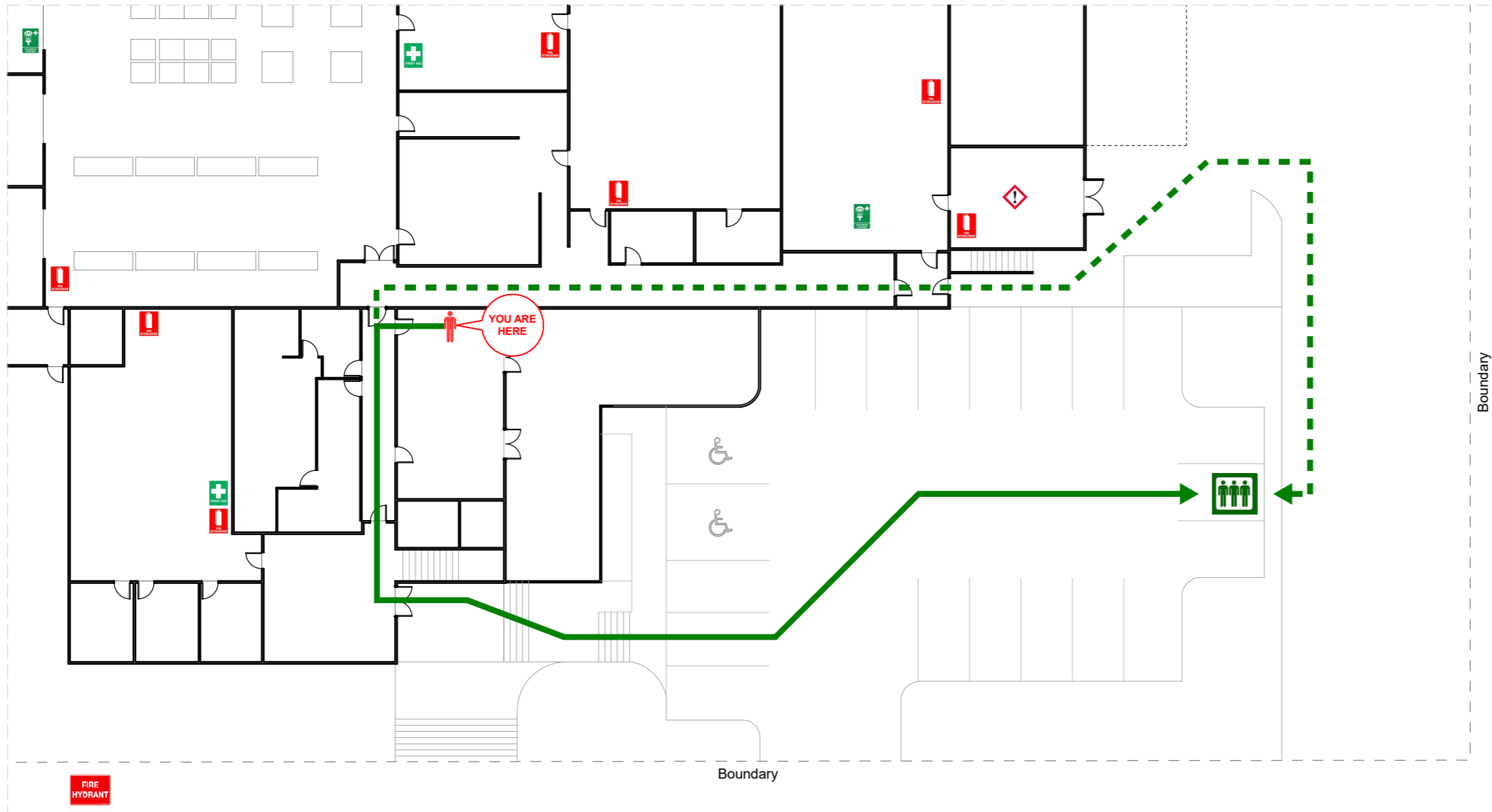
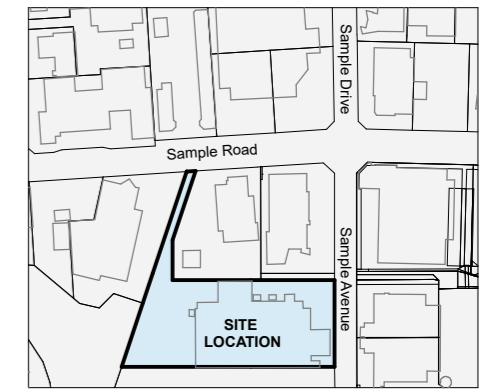


CAD PLANS
6 CHELSEA AVENUE
AUCKLAND
NEW ZEALAND 1062
+6421 108 0460
OFFICE@CADPLANS.CO.NZ

EVACUATION DIAGRAM

Canteen

Date: 07/10/2022



Canteen
 Main Exit - Reception Door
 Alternate Exit - Hallway Exit
 Scale - 1:250 @ A3 Paper

- | | | | | | |
|--|-------------------|--|-----------------|--|----------------------|
| | Fire Extinguisher | | Dangerous Goods | | Fire Exit |
| | First Aid | | Eye Wash | | Main Exit Route |
| | Fire Hydrant | | Assembly Area | | Alternate Exit Route |



EVACUATION PROCEDURES

1. Remain Calm. Do not panic.
2. Follow WARDEN instructions and move to nominated safe area, await instructions
3. When advised, leave building by designated exit or nearest safe exit. **DO NOT USE LIFTS.**
4. Proceed to the closest **ASSEMBLY AREA** (see map), or as directed by Wardens/Emergency Services.
5. Remain at **ASSEMBLY AREA** until otherwise directed by Wardens/Emergency Services.

IN CASE OF EMERGENCY

- ISOLATE**
- Ensure all personnel are well clear of danger.
- COMMUNICATE**
- Inform all people in vicinity of the emergency
 - Call 111
- EVACUATE**
- Evacuate the facility and inform the chief warden.
- RECORD/REPORT**
- Record actions, report status to emergency services.

RING 111

FIRE EXTINGUISHER OPERATION

DO NOT ATTEMPT TO FIGHT FIRE IF ALONE

- Stay back from fire 2-3 meters.
- Check extinguisher is correct for the type of fire.
- Check pressure gauge.
- Ensure door or clear exit path is directly behind you.
- Use the **PASS** method:
Pull Pin
Aim at the edge of fire
Squeeze the handle
Sweep the fire

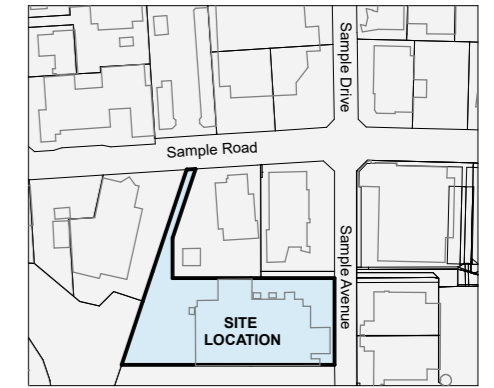


CAD PLANS
 6 CHELSEA AVENUE
 AUCKLAND
 NEW ZEALAND 1062
 +6421 108 0460
 OFFICE@CADPLANS.CO.NZ

EVACUATION DIAGRAM

Old Warehouse

Date: 07/10/2022

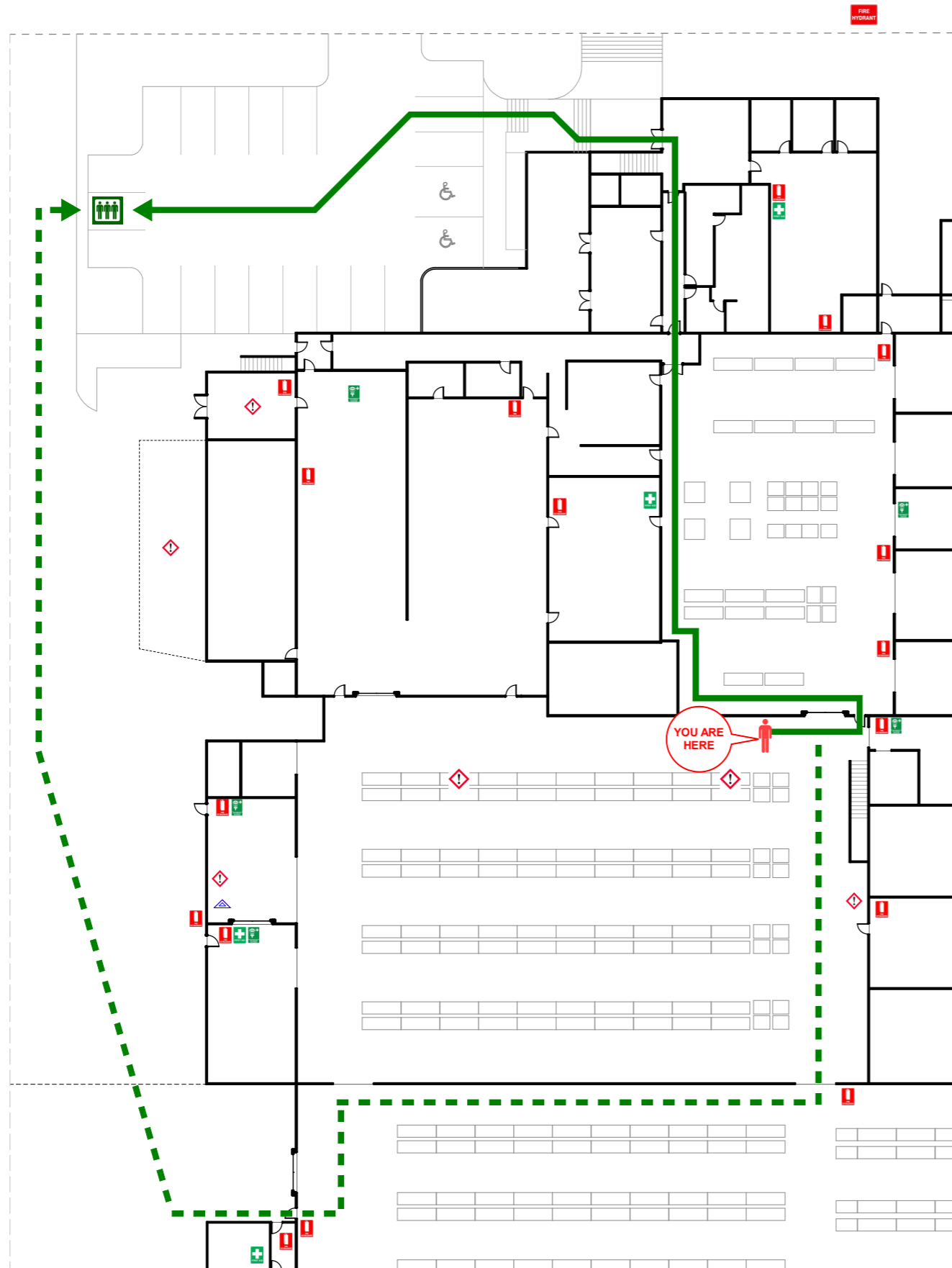


Old Warehouse

Main Exit - Reception Door

Alternate Exit - Warehouse Door

Scale - 1:400 @ A3 Paper



-  Fire Extinguisher
-  First Aid
-  Fire Hydrant
-  Dangerous Goods
-  Eye Wash
-  Assembly Area
-  Fire Exit
-  Main Exit Route
-  Alternate Exit Route

EVACUATION PROCEDURES

1. Remain Calm. Do not panic.
2. Follow WARDEN instructions and move to nominated safe area, await instructions
3. When advised, leave building by designated exit or nearest safe exit. **DO NOT USE LIFTS.**
4. Proceed to the closest **ASSEMBLY AREA** (see map), or as directed by Wardens/Emergency Services.
5. Remain at **ASSEMBLY AREA** until otherwise directed by Wardens/Emergency Services.

IN CASE OF EMERGENCY

ISOLATE

- Ensure all personnel are well clear of danger.

COMMUNICATE

- Inform all people in vicinity of the emergency
- Call 111

EVACUATE

- Evacuate the facility and inform the chief warden.

RECORD/REPORT

- Record actions, report status to emergency services.

RING 111

FIRE EXTINGUISHER OPERATION

DO NOT ATTEMPT TO FIGHT FIRE IF ALONE

- Stay back from fire 2-3 meters.
- Check extinguisher is correct for the type of fire.
- Check pressure gauge.
- Ensure door or clear exit path is directly behind you.
- Use the **PASS** method:
 - P**ull Pin
 - A**im at the edge of fire
 - S**queeze the handle
 - S**weep the fire

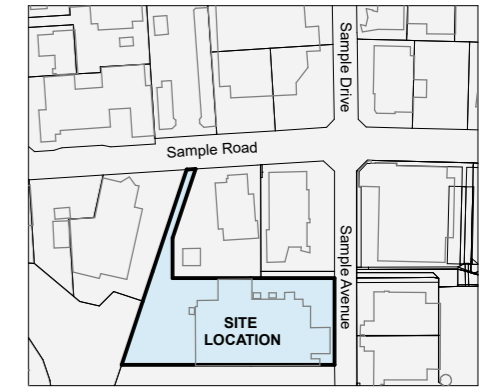


CAD PLANS
 6 CHELSEA AVENUE
 AUCKLAND
 NEW ZEALAND 1062
 +6421 108 0460
 OFFICE@CADPLANS.CO.NZ

EVACUATION DIAGRAM

R and D Lab

Date: 07/10/2022



EVACUATION PROCEDURES

1. Remain Calm. Do not panic.
2. Follow WARDEN instructions and move to nominated safe area, await instructions
3. When advised, leave building by designated exit or nearest safe exit. **DO NOT USE LIFTS.**
4. Proceed to the closest **ASSEMBLY AREA** (see map), or as directed by Wardens/Emergency Services.
5. Remain at **ASSEMBLY AREA** until otherwise directed by Wardens/Emergency Services.

IN CASE OF EMERGENCY

ISOLATE

- Ensure all personnel are well clear of danger.

COMMUNICATE

- Inform all people in vicinity of the emergency
- Call 111

EVACUATE

- Evacuate the facility and inform the chief warden.

RECORD/REPORT

- Record actions, report status to emergency services.

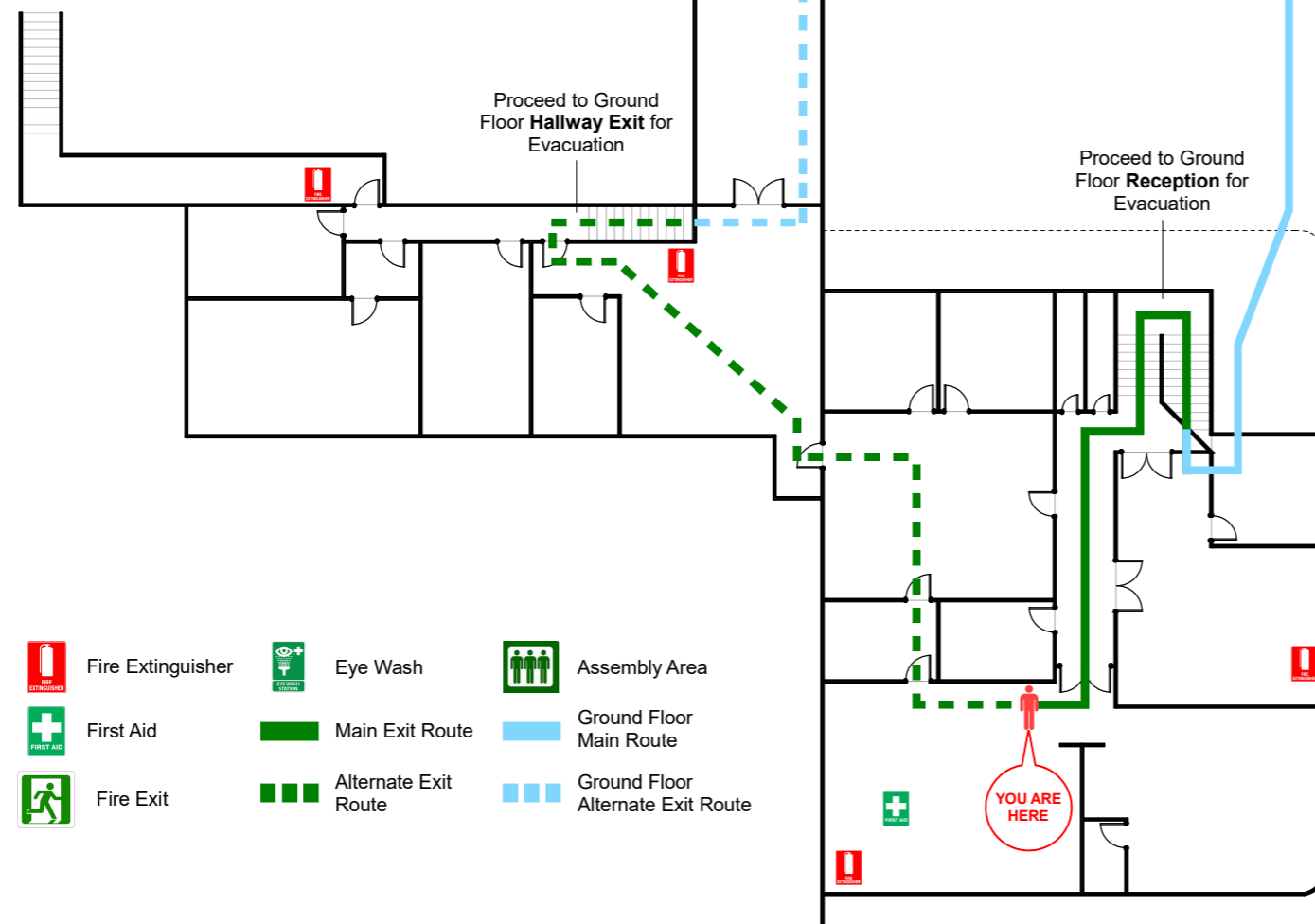
RING 111

FIRE EXTINGUISHER OPERATION

DO NOT ATTEMPT TO FIGHT FIRE IF ALONE

- Stay back from fire 2-3 meters.
- Check extinguisher is correct for the type of fire.
- Check pressure gauge.
- Ensure door or clear exit path is directly behind you.
- Use the **PASS** method:
 - P**ull Pin
 - A**im at the edge of fire
 - S**queeze the handle
 - S**weep the fire

R and D Lab
 Main Exit - Reception Door
 Alternate Exit - Hallway Exit
 Scale - 1:250 @ A3 Paper



- | | | | | | |
|--|-------------------|--|----------------------|--|-----------------------------------|
| | Fire Extinguisher | | Eye Wash | | Assembly Area |
| | First Aid | | Main Exit Route | | Ground Floor Main Route |
| | Fire Exit | | Alternate Exit Route | | Ground Floor Alternate Exit Route |

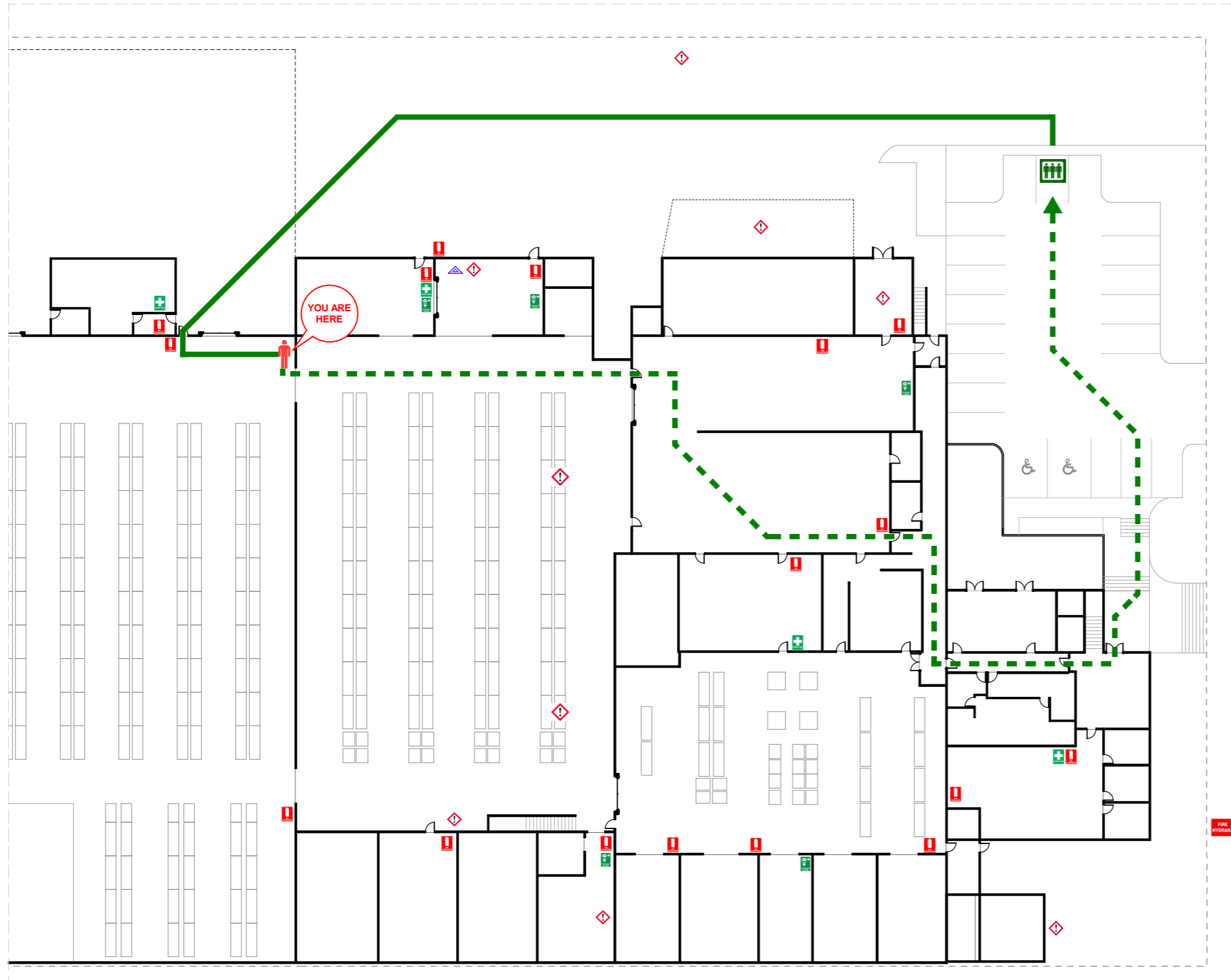
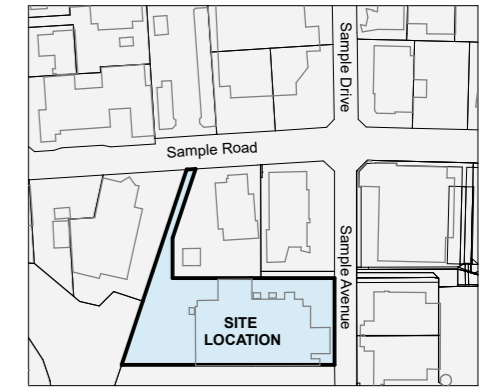


CAD PLANS
 6 CHELSEA AVENUE
 AUCKLAND
 NEW ZEALAND 1062
 +6421 108 0460
 OFFICE@CADPLANS.CO.NZ

EVACUATION DIAGRAM

New Warehouse

Date: 07/10/2022



New Warehouse
 Main Exit - Warehouse Exit Door
 Alternate Exit - Reception Door
 Scale - 1:400 @ A3 Paper

- | | | | | | |
|--|-------------------|--|-----------------|--|----------------------|
| | Fire Extinguisher | | Dangerous Goods | | Fire Exit |
| | First Aid | | Eye Wash | | Main Exit Route |
| | Fire Hydrant | | Assembly Area | | Alternate Exit Route |



EVACUATION PROCEDURES

1. Remain Calm. Do not panic.
2. Follow WARDEN instructions and move to nominated safe area, await instructions
3. When advised, leave building by designated exit or nearest safe exit. **DO NOT USE LIFTS.**
4. Proceed to the closest **ASSEMBLY AREA** (see map), or as directed by Wardens/Emergency Services.
5. Remain at **ASSEMBLY AREA** until otherwise directed by Wardens/Emergency Services.

IN CASE OF EMERGENCY

- ISOLATE**
 - Ensure all personnel are well clear of danger.
- COMMUNICATE**
 - Inform all people in vicinity of the emergency
 - Call 111
- EVACUATE**
 - Evacuate the facility and inform the chief warden.
- RECORD/REPORT**
 - Record actions, report status to emergency services.

RING 111

FIRE EXTINGUISHER OPERATION

DO NOT ATTEMPT TO FIGHT FIRE IF ALONE

- Stay back from fire 2-3 meters.
- Check extinguisher is correct for the type of fire.
- Check pressure gauge.
- Ensure door or clear exit path is directly behind you.
- Use the **PASS** method:
Pull Pin
Aim at the edge of fire
Squeeze the handle
Sweep the fire



CAD PLANS
 6 CHELSEA AVENUE
 AUCKLAND
 NEW ZEALAND 1062
 +6421 108 0460
 OFFICE@CADPLANS.CO.NZ